



Powerful Facility Energy Conference

Decarbonization and Electrification: Beneficial Electrification for Existing Buildings

Melissa Sokolowsky, Northwest Energy Efficiency Council

Rebecca Sheppard, Northwest Energy Efficiency Council

Steve Abercrombie, Sustainable Building Science Technology Program at South Seattle College

March 16, 2023

Sustaining Sponsors:



**Seattle
City Light**



**IFMA™ Seattle
Chapter**
International Facility Management Association

Partner Sponsor:



Introduction



Melanie Danuser
NEEC
Smart Buildings Center



Rebecca Sheppard
NEEC
Smart Buildings Center



Melissa Sokolowsky
NEEC
Smart Buildings Center



Steve Abercrombie
Seattle South Colleges



Agenda

- **WHAT:** Definitions - Electrification and Decarbonization
- **WHY and HOW:** Goals of Electrification and The Role of Buildings
- **Benefits** of Electrification
- Overview of Electrification **Technology**
- Common **Barriers**
- **Strategies** to overcome barriers
- **Case Study:** Seattle Central College's EcoDistrict Project.

The What

What is Decarbonization?

Reduction or elimination of CO₂ emissions

Images source: energy.gov



What is Electrification?

Replacing technologies that use fossil fuels

- Natural gas
- Petroleum/diesel

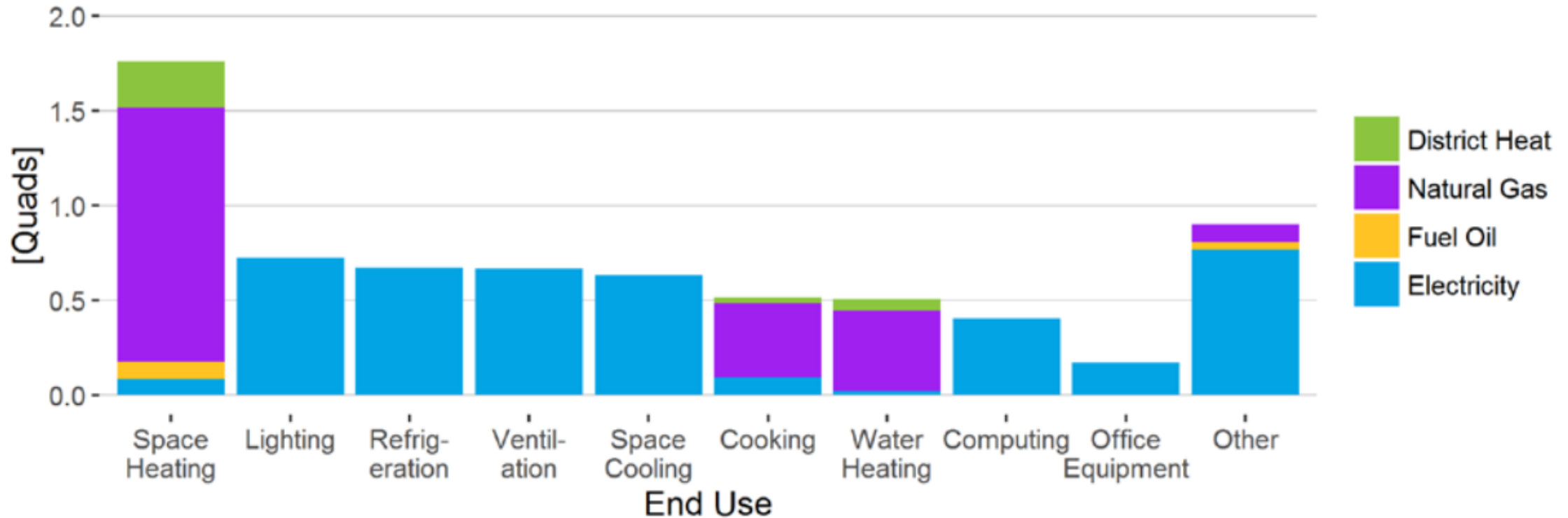


With technologies and systems that use electricity



Images source: energy.gov

Carbon Emissions in Existing Buildings



Final energy end use in commercial buildings (based on 2012 CBECS)

Source: National Renewable Energy Laboratory

The Why



Environmental Drivers: GHG Emissions

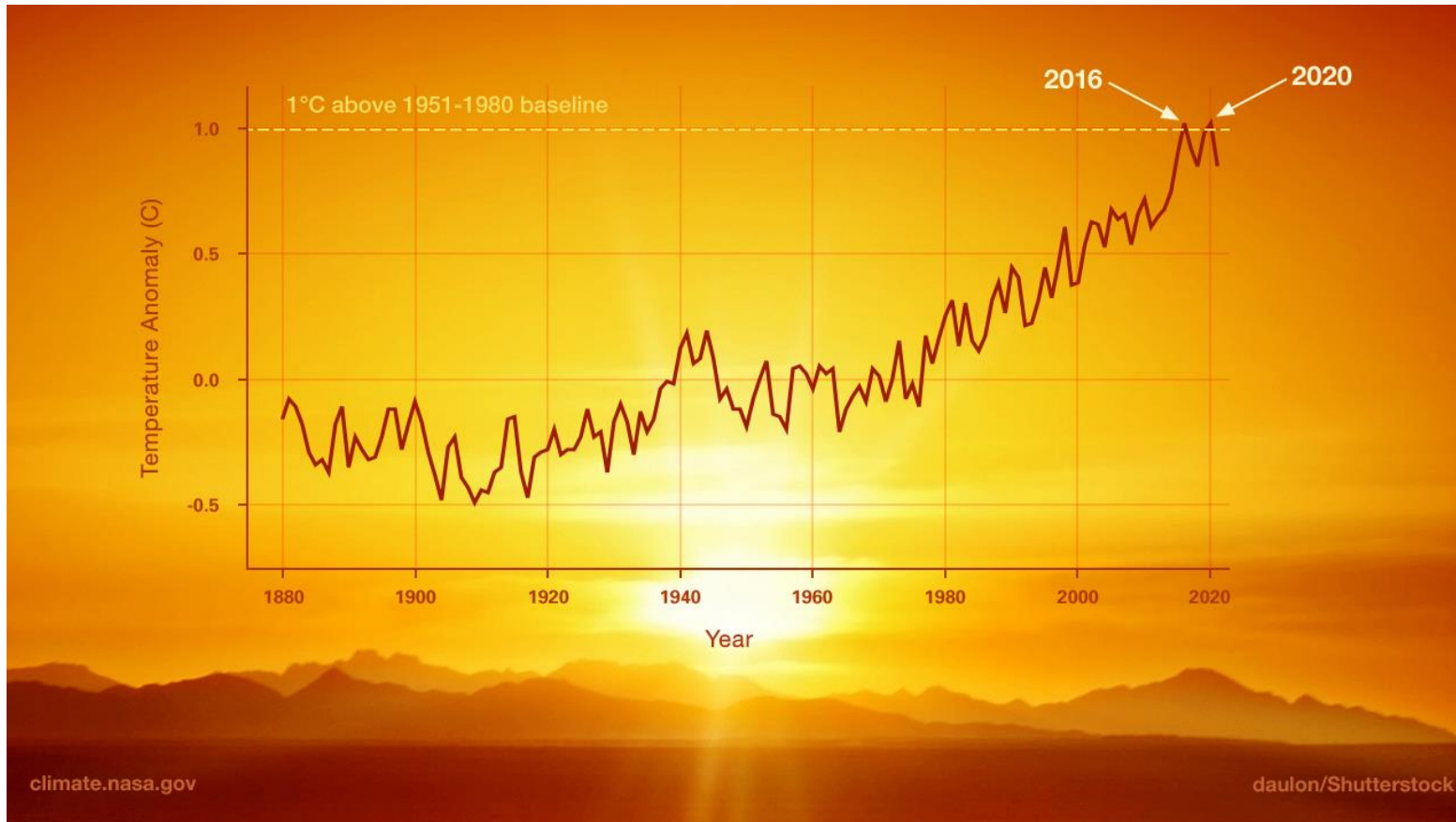


Image credit: NASA/JPL-Caltech

Policy Trends



2025
NO COAL
STANDARD



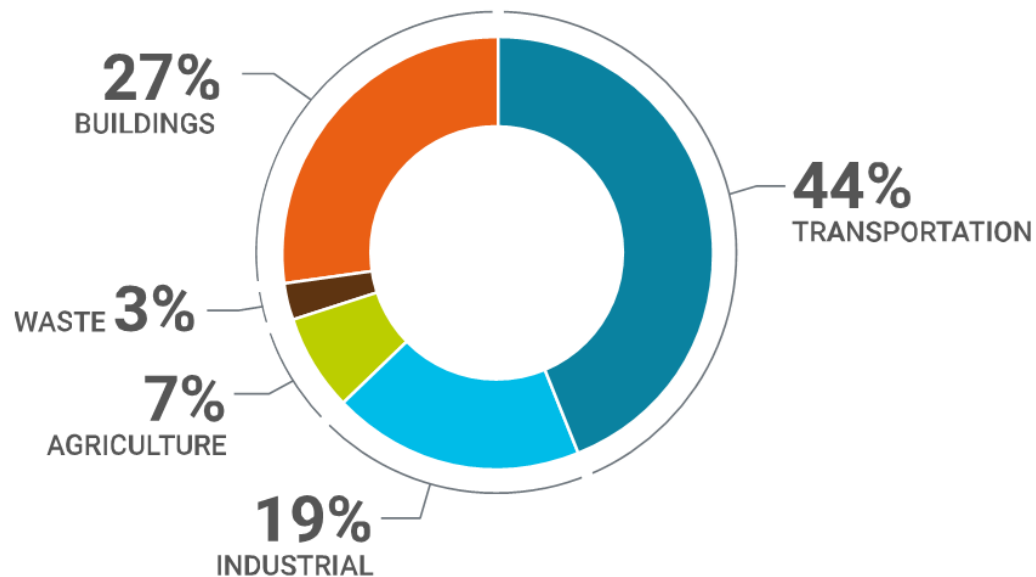
2030
GHG NEUTRAL
STANDARD



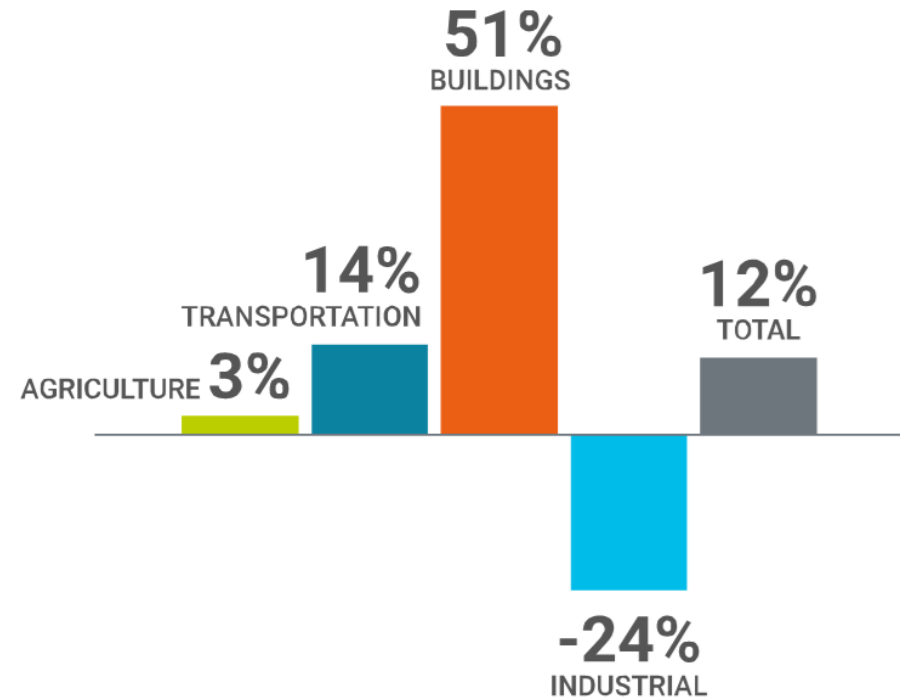
2045
100% CLEAN
STANDARD

The Impact of Buildings

Buildings are the second largest source of greenhouse gas emissions in Washington (2015)



As Washington's population has grown, greenhouse gas emissions from buildings jumped significantly from 1990-2015



The How

The HOW

Need 50% reduction in carbon emissions by 2030 and zero carbon by 2050

Role of the buildings sector:

- 39% of carbon emissions globally
- 80% of buildings that will exist in 2030 already exist today

To meet targets:

- 50% renewables in electricity generation by 2030
- Energy-using equipment must be electrified
- Annual energy-efficiency investments need to grow by a factor of four by 2040

Source: Rocky Mountain Institute

The HOW

To meet the needs of changing energy infrastructure, buildings will need to be:

- More energy-efficient
- Grid-interactive
- Load flexible

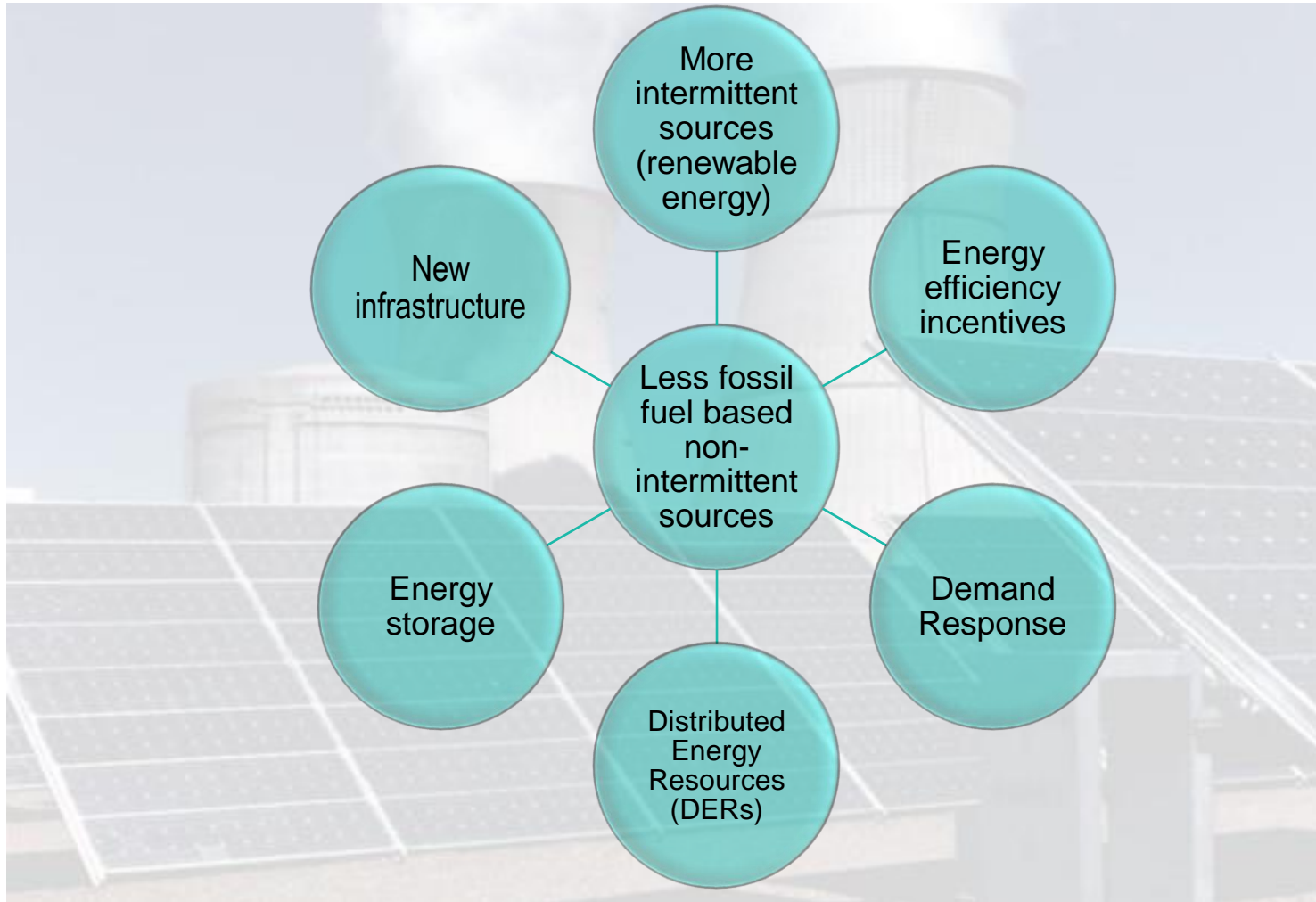
Buildings will need to leverage:

- Onsite generation
- Energy storage (thermal/electric)
- Intelligent, predictive controls that shift, shed and modulate building loads

Buildings can provide grid services needed to support the energy transition

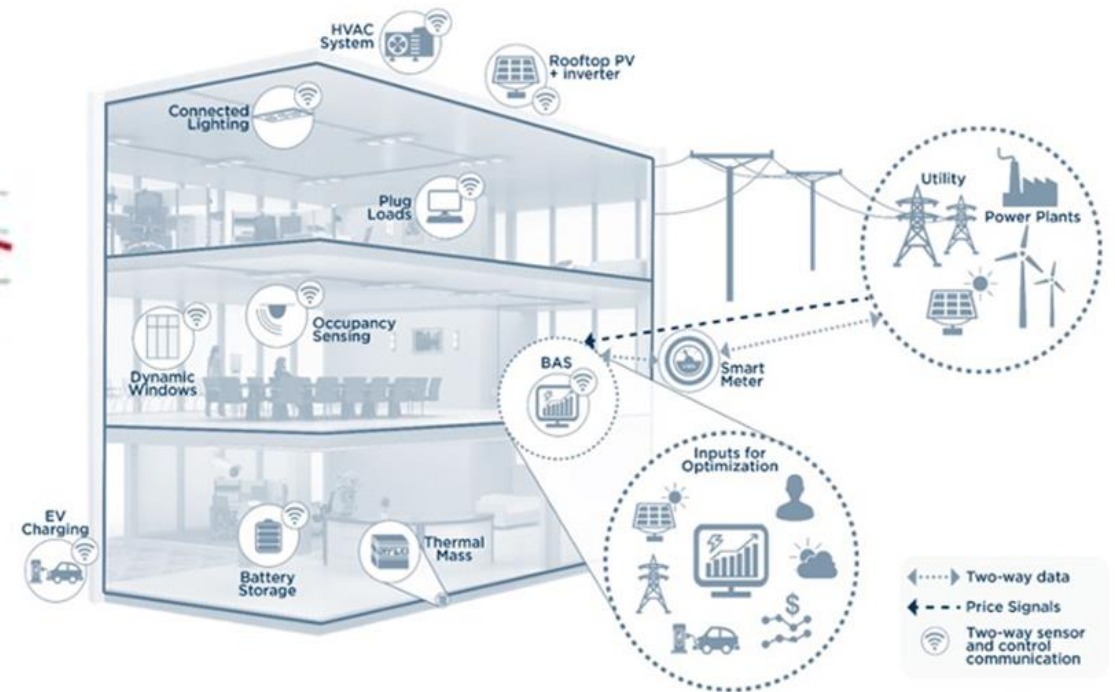
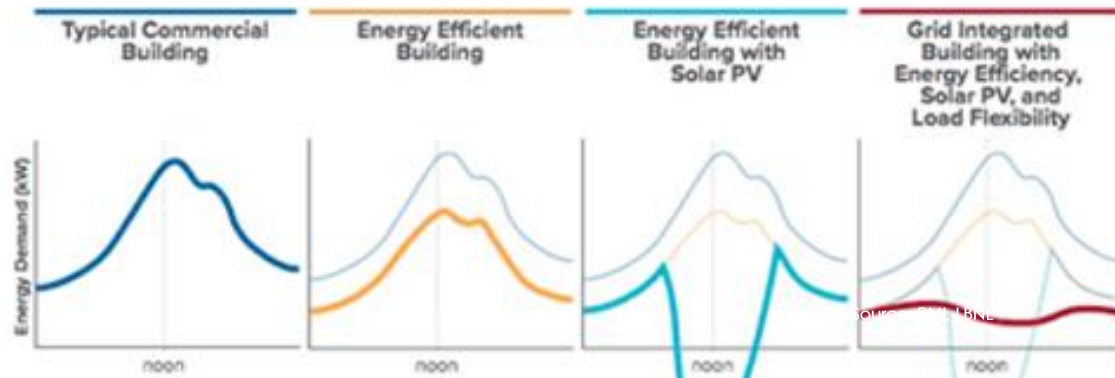
- Seth Coan, RMI Source: Orchestrating the energy transition: Tuning into buildings | Greenbiz

Utility Response



Grid Integration

Grid Integrated Building: Load Profiles



Benefits of Electrification

Benefits of Electrification

Mitigation
of the most
severe
effects of
climate
change

Improved
air quality
and health

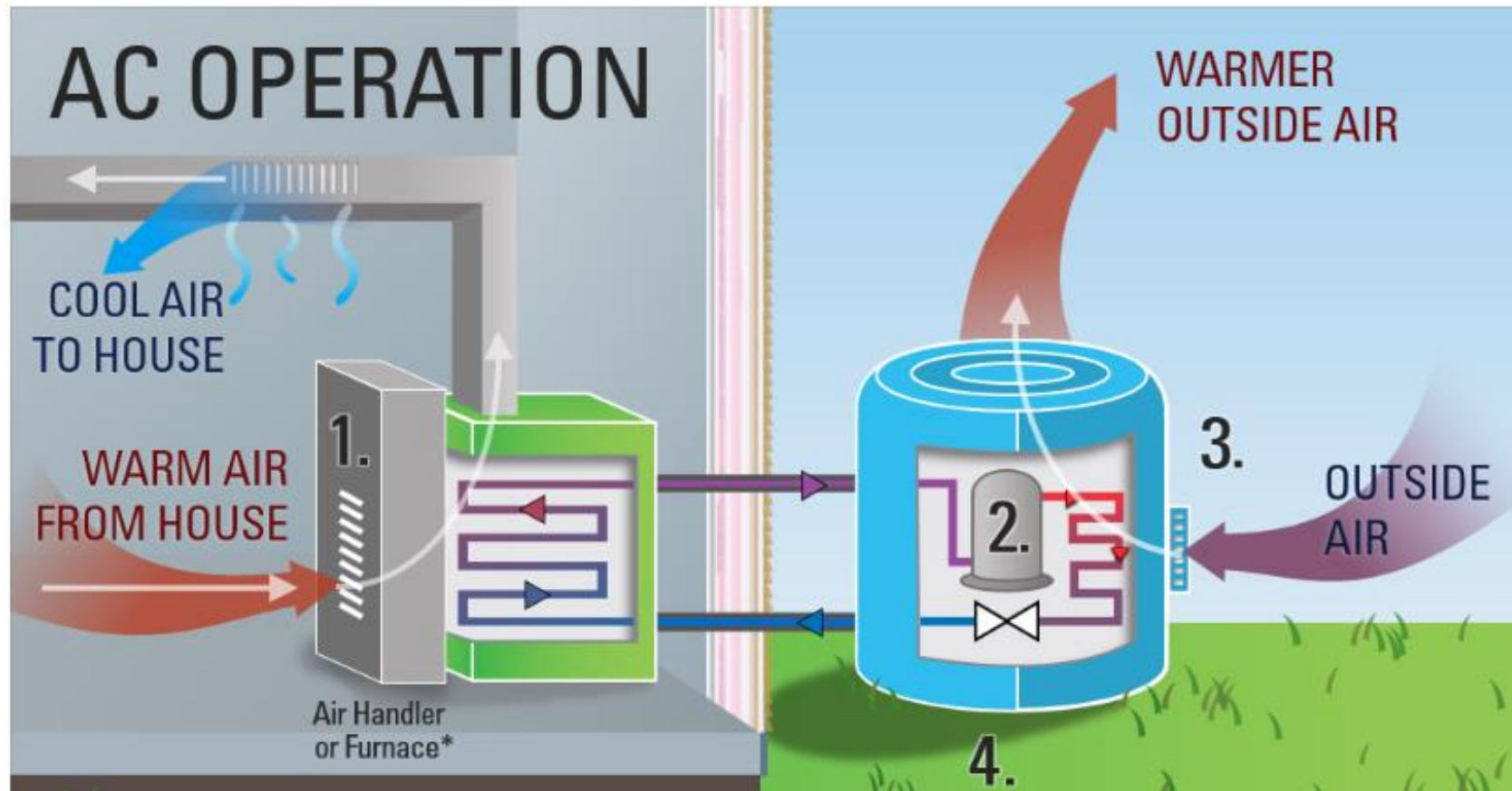
Energy cost
savings

Job
creation

Improved
comfort
and
productivity

Overview of Electrification Technology

Heat Pumps



Heat Pump Classification

Source

- air, water, or ground

Distribution

- ducted or ductless

Configuration

- packaged or split

Variable Refrigerant Flow (VRF)

- Very efficient
- Multiple zones
- Heating and cooling
- All electric
- Can provide DHW

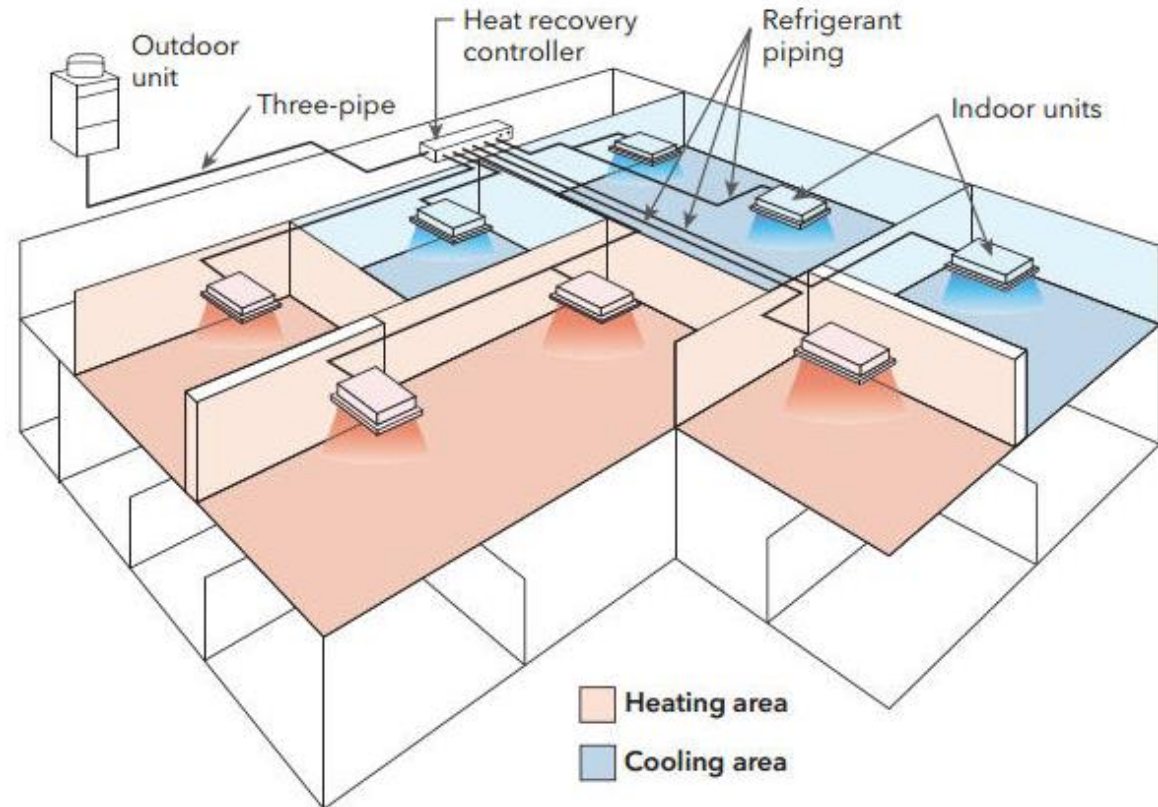


Image courtesy of Slipstream Inc.

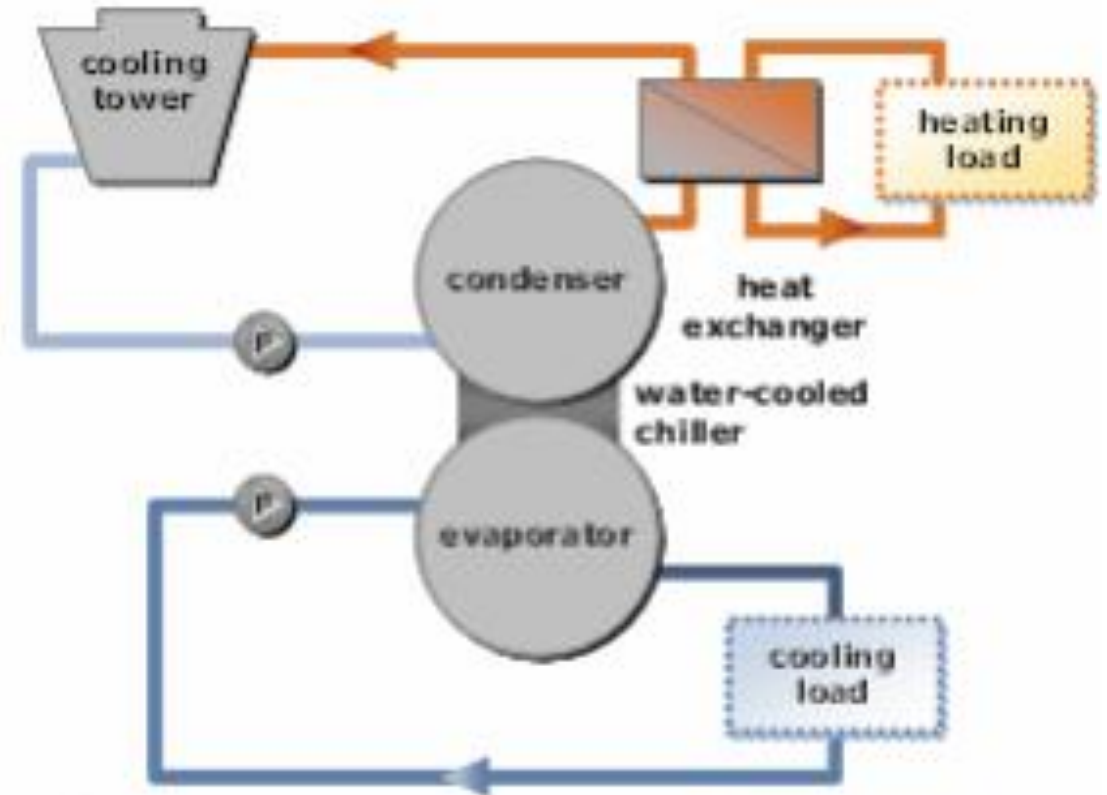
Domestic Hot Water Heating

- Heat Pump Water Heaters (HPWH)
 - Unitary
 - Split
- Components:
 - Heat pumps
 - Hot water storage
 - Temp maintenance
 - Controls



Energy/Heat Recovery

- Paired with heat pump systems to increase efficiency
- Energy recovery ventilators (ERVs) or heat recovery ventilators (HRVs)
- Heat recovery chillers



Barriers

Barriers

Technical/Logistical

- Infrastructure limitations
- Hardware and software integration
- Electrical service capacity
- Maintenance support

Financial

- Upfront costs
 - Installation
 - Downtime
- Training/hiring for additional trade skills

Strategies & Solutions

Strategies & Solutions

Technical/Logistical

- Efficiency measures to reduce need for capacity upgrades
- Thorough planning for retrofits
- Onsite renewables
- Energy storage
 - Thermal
 - Electrical (batteries, EVs)
- Maintenance – in-house staff training/
clearly defined outsourced maintenance contract

Financial

- End-of-life equipment retrofit opportunities
- Consider total cost of ownership (TCO) including health/safety benefits
- Leverage benefits of smart building technology to reduce operating costs
- Demand response revenue opportunities
- Funding:
 - Creative financing structures
 - Incentives, rebates, grants

Funding Mechanisms

- Federal/State (e.g. IRA, CBPS) grants
- Utility Incentives
- Pay for Performance
- C-PACER
- Energy Service Performance Contracting (ESPC)
- Energy Efficiency as a Service (EEaS)

Strategy – Retrofit Planning



Opportunity to:

- Accomplish energy efficiency
- Incorporate electric replacement options
- Update electrical infrastructure and meet power requirements
- Introduce and integrate technologies for control and load reduction

Retrofit and Replacement Considerations

Logistical considerations

- Type of equipment to be replaced
- Size/layout of building and equipment
- Climate zones
- Load profiles
- Energy distribution temperatures required
- Electrical service capacity/distribution
- Maintenance skills required

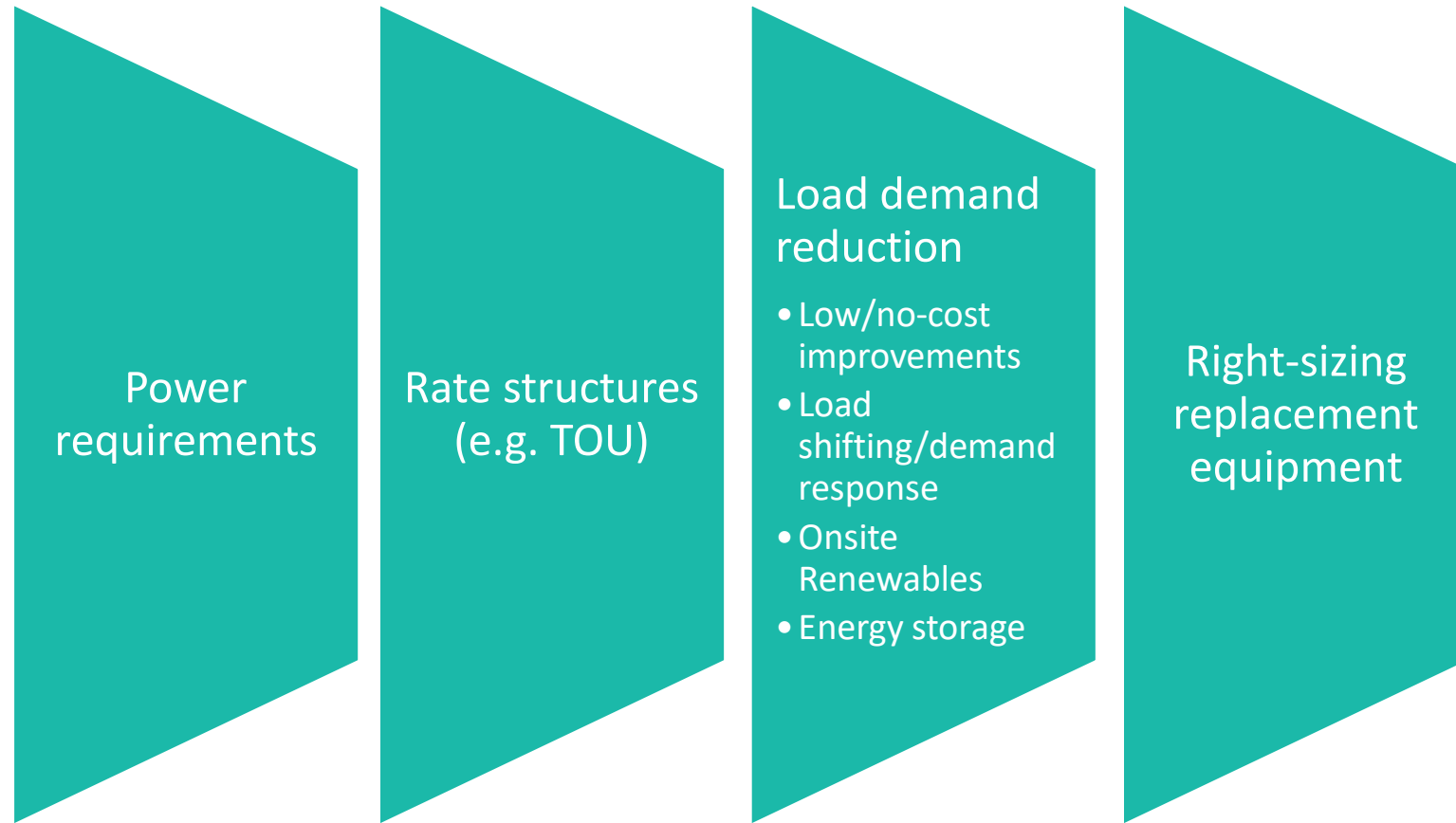
Cost Considerations

- First cost vs. total cost of ownership (TCO)
- Utility rate structures, incentives and value of resilience

Technical Considerations: i.e. Refrigerant types and GWP

- Preventative and reactive maintenance programming, training and technical skills
- Refrigerant management program

Retrofit and Replacement Considerations (cont.)



Identifying Replacement Options

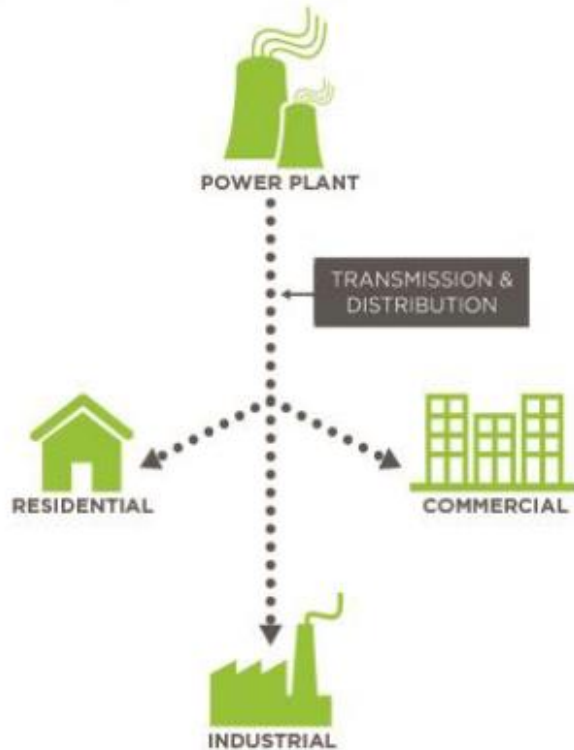
Scenario	Replacement Option
Small buildings <ul style="list-style-type: none">• Conventional RTU	<ul style="list-style-type: none">• Heat pump RTU, ERV/HRV, VRF
Medium buildings <ul style="list-style-type: none">• VAV Reheat	<ul style="list-style-type: none">• Heat pump AHUs, ASHPs, multi-pipe with heat recovery
Large buildings <ul style="list-style-type: none">• Steam boilers• Hot water boilers• Chillers	<ul style="list-style-type: none">• Reduce load, weatherization, radiator redesign, VRF• ASHPs, WSHPs, VRF• Heat recovery chillers, chilled water return as source for heat pumps

Comparison of Refrigerants

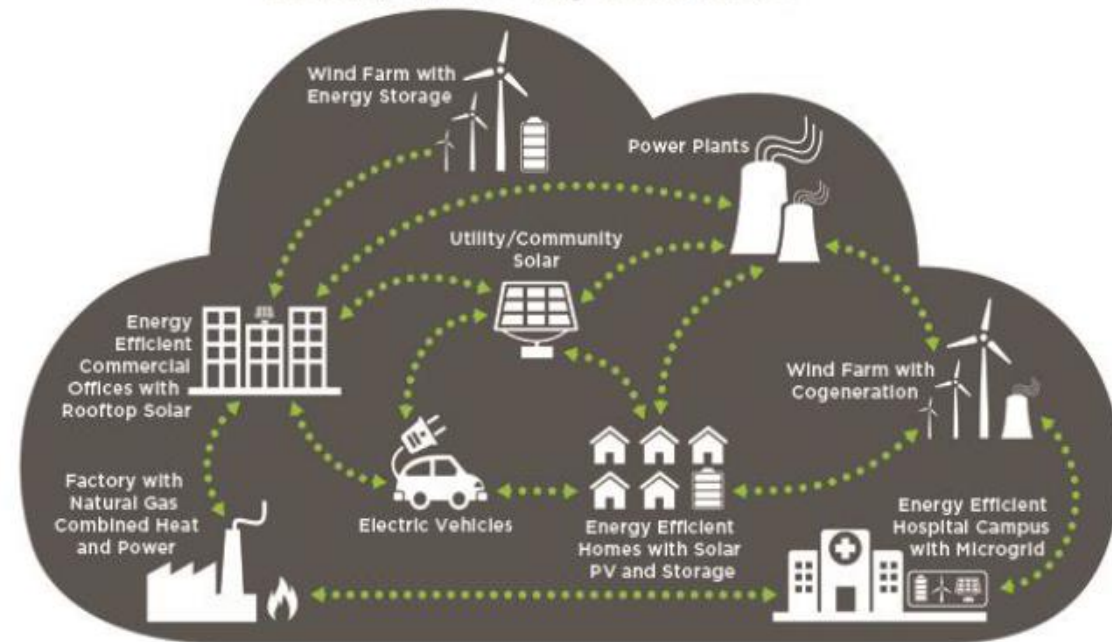
Refrigerant	Refrigerant Family	GWP
R22	HCFC	1,810
R32	HFC	675
R134A	HFC	1,430
R290 (propane)	HC	3.3
R404a	HFC	3,922
R407c	HFC	1,774
R410a	HFC	2,088
R717 (ammonia)	Inorganic compound	0
R744 (CO ₂)	Inorganic compound	1
R1234ze (E)	HFO	~1

Distributed Energy Resources (DER)

TODAY: ONE-WAY POWER SYSTEM Central, One-Way Power Systems



EMERGING: THE ENERGY CLOUD Distributed, Two-Way Power Flows



O&M Considerations

- Preventive maintenance
- Staffing/training
- Outsourced support
- Safety protocols
- IT Security
- Automation and Programming



Resources

Electrification & Decarbonization: Exploring U.S. Energy Use and Greenhouse Gas Emissions in Scenarios with Widespread Electrification and Power Sector Decarbonization

<https://www.nrel.gov/docs/fy17osti/68214.pdf>

Orchestrating the energy transition: Tuning into buildings

<https://www.greenbiz.com/article/orchestrating-energy-transition-tuning-buildings>

Variable Refrigerant Flow Technology for Commercial Buildings

<https://facilityexecutive.com/2019/04/variable-refrigerant-flow-technology-commercial-facilities/>

Case Study





Powerful Facility
Energy Conference

Existing Building Decarbonization

Steve Abercrombie, South Seattle College
March 16, 2023

Sustaining Sponsors:



**Seattle
City Light**



IFMA™ Seattle
Chapter
International Facility Management Association

Partner Sponsor:

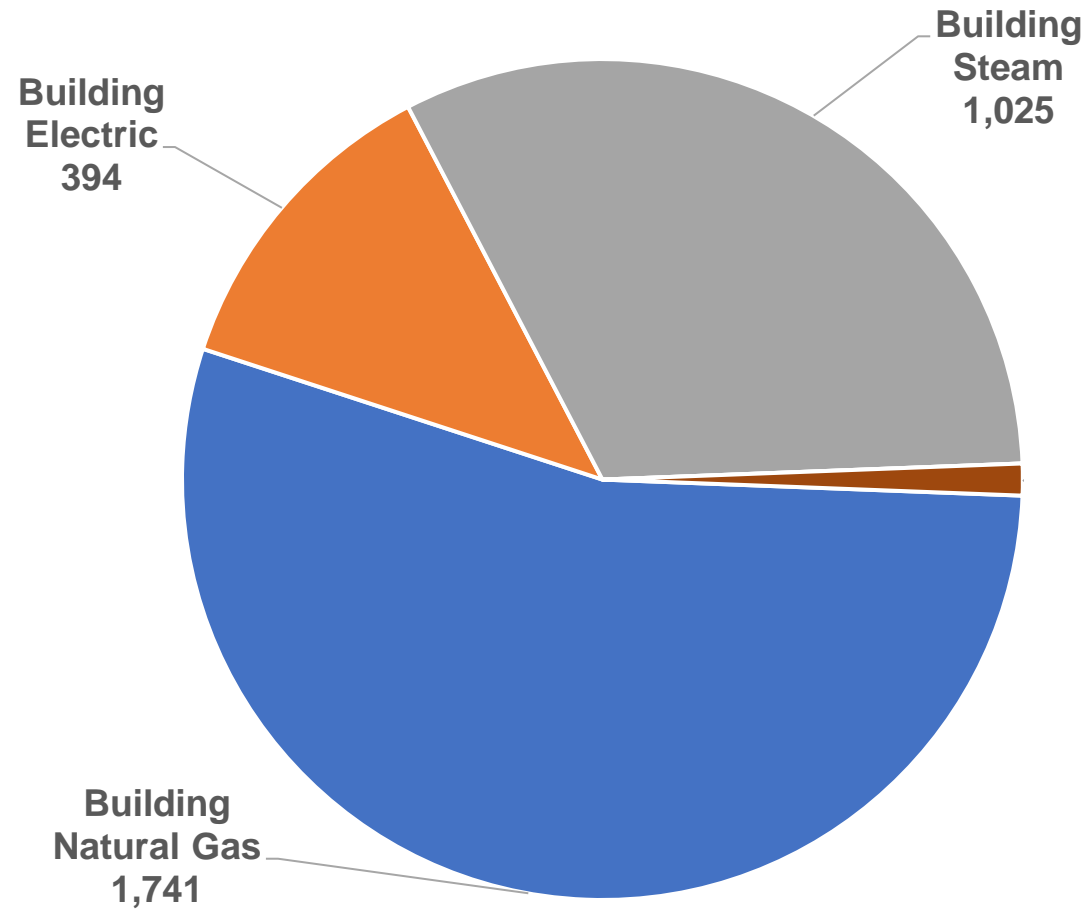


Broadway Edison – Seattle Central College (SCC)



- 486,000 Square feet
- Oldest building in the Seattle district
- Heating system harks back to the days of steam power
- Doesn't fit WA state's standard capital funding model
- 60% of SCC's campus, 85% of instructional space
- Steam heating system served by Centrio is reaching a point of system failure

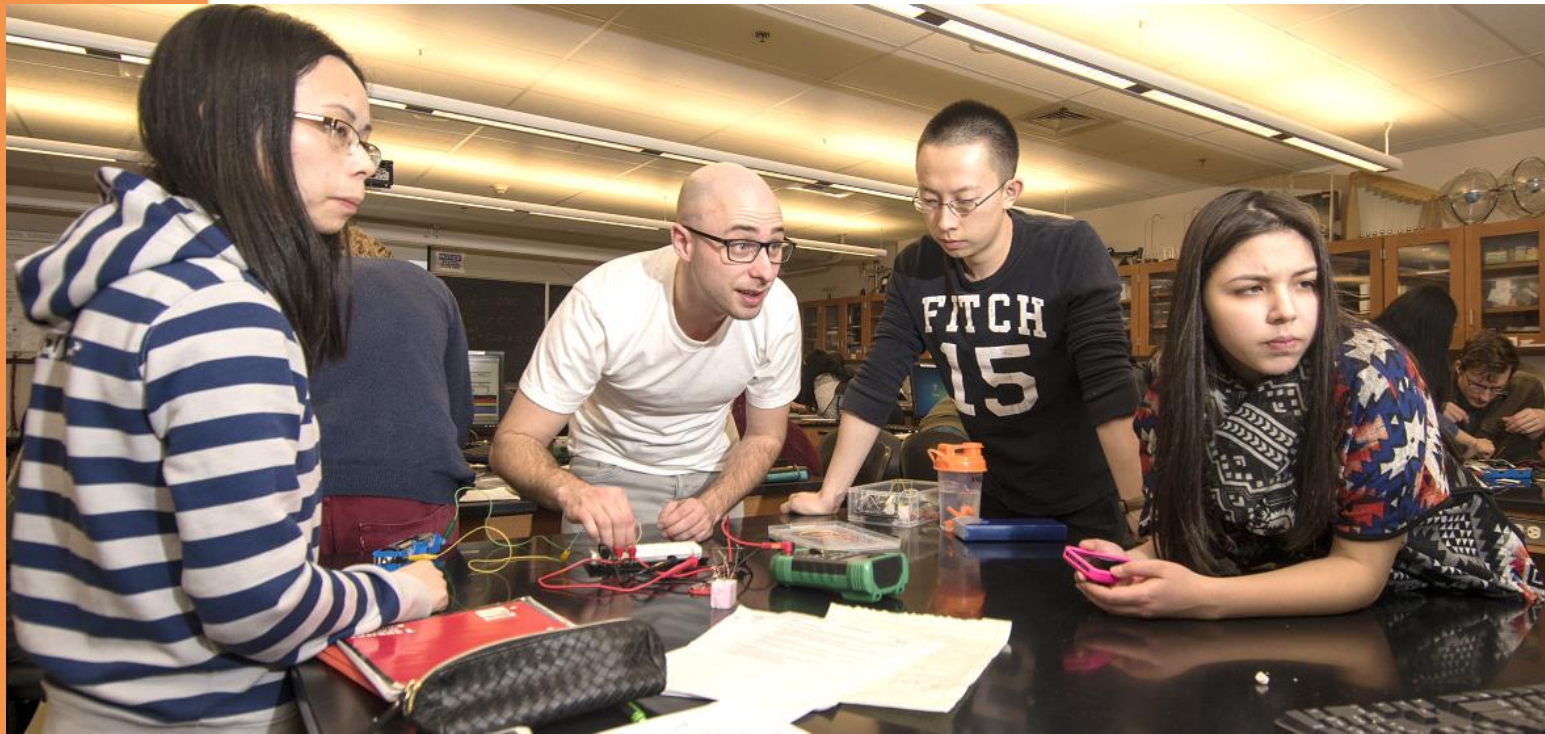
GHG Emissions



Replacing Central steam with low carbon heat generation

- Steam replacement an imperative
- Reduces CO2 and other emissions
- \$23+ million investment
- ~\$1 million increase in annual expense
- Energy consumer -> provider transition
- Living laboratory for students

Our Vision - A New Approach to Resilient and Clean Infrastructure



- Reduce risk of long-term campus outages (Moving from steam heating to heat pump technology)
- Reduce climate change impact
- Reduce utility increases through efficiencies
- Mitigate increase of deferred maintenance

Seattle Central College Energy District Approach



Shared Energy



Zero Carbon



Digital
Backbones



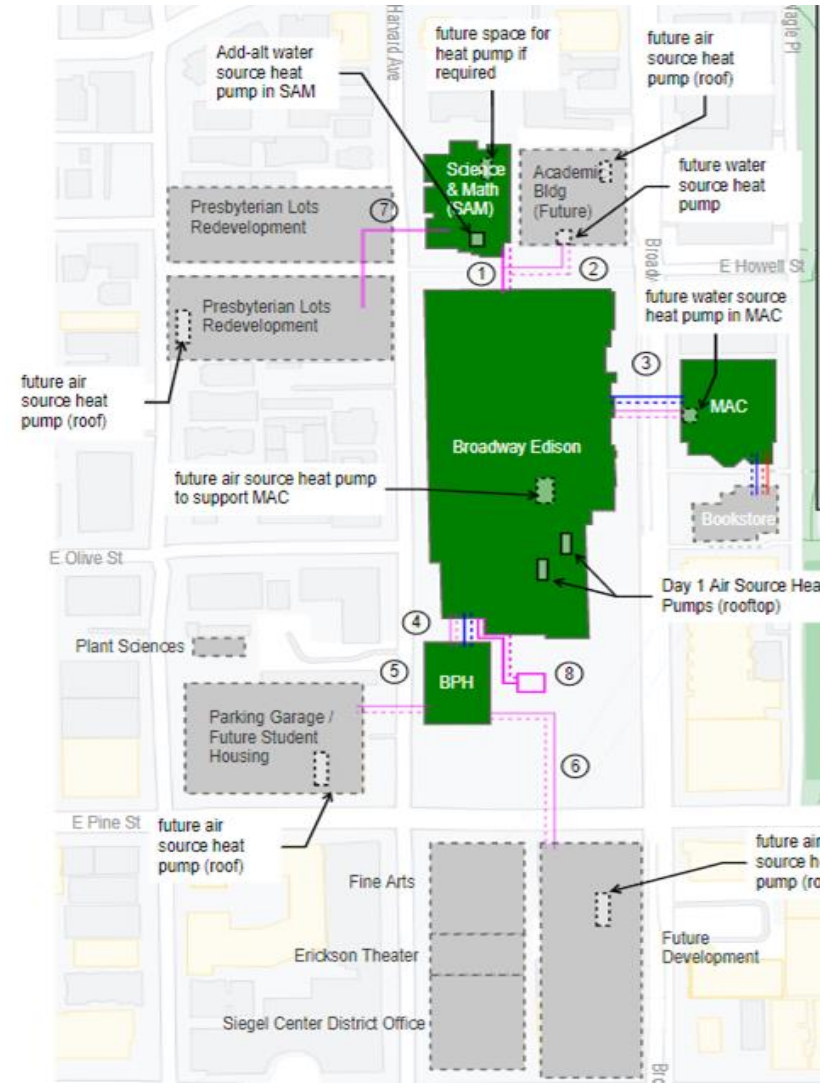
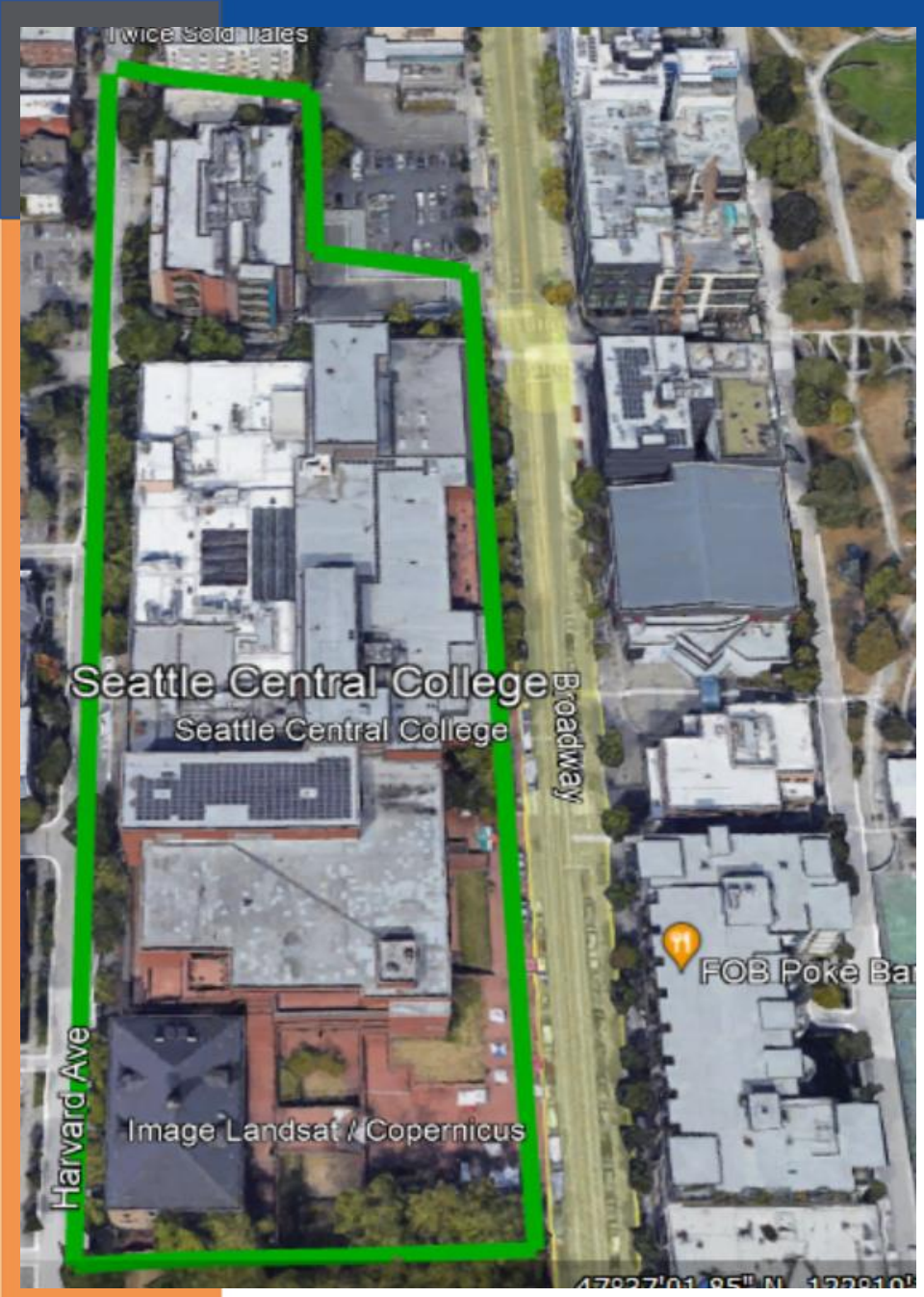
Building & Utility
Partnerships



Engaged Occupants

- Develop a district energy sharing strategy to address energy efficiency, decarbonization and resiliency concerns
- Engage Seattle City Light as a partner to support its electrification and decarbonization goals for Capital Hill
- Onboard key community partners / neighbors to develop and align on the goals and objectives of a Capital Hill Energy District approach & solution
- Capitalize on industry partnerships and experience to develop a strategy and plan to address immediate needs and future goals.

Eco District Site Plan



Addressing deferred infrastructure resiliency risk while decarbonizing.

Strategy



- Efficiency first:
 - Lighting retrofits
 - Air Source Heat pumps
 - Envelope improvements
- R & D grant from Commerce
 - Installation of Air -> Water heat pump. Demonstrate replacement at central plan
- Major Capital project
 - Working through public funding!?!



Join an Information Session!

http://bit.ly/SBST_Info

SBST Program Contacts

Sheila Roe, Interim Program Manager

(206) 934-6783

Sheila.Roe@seattlecolleges.edu

Steve Abercrombie, Faculty

(206) 934-5375

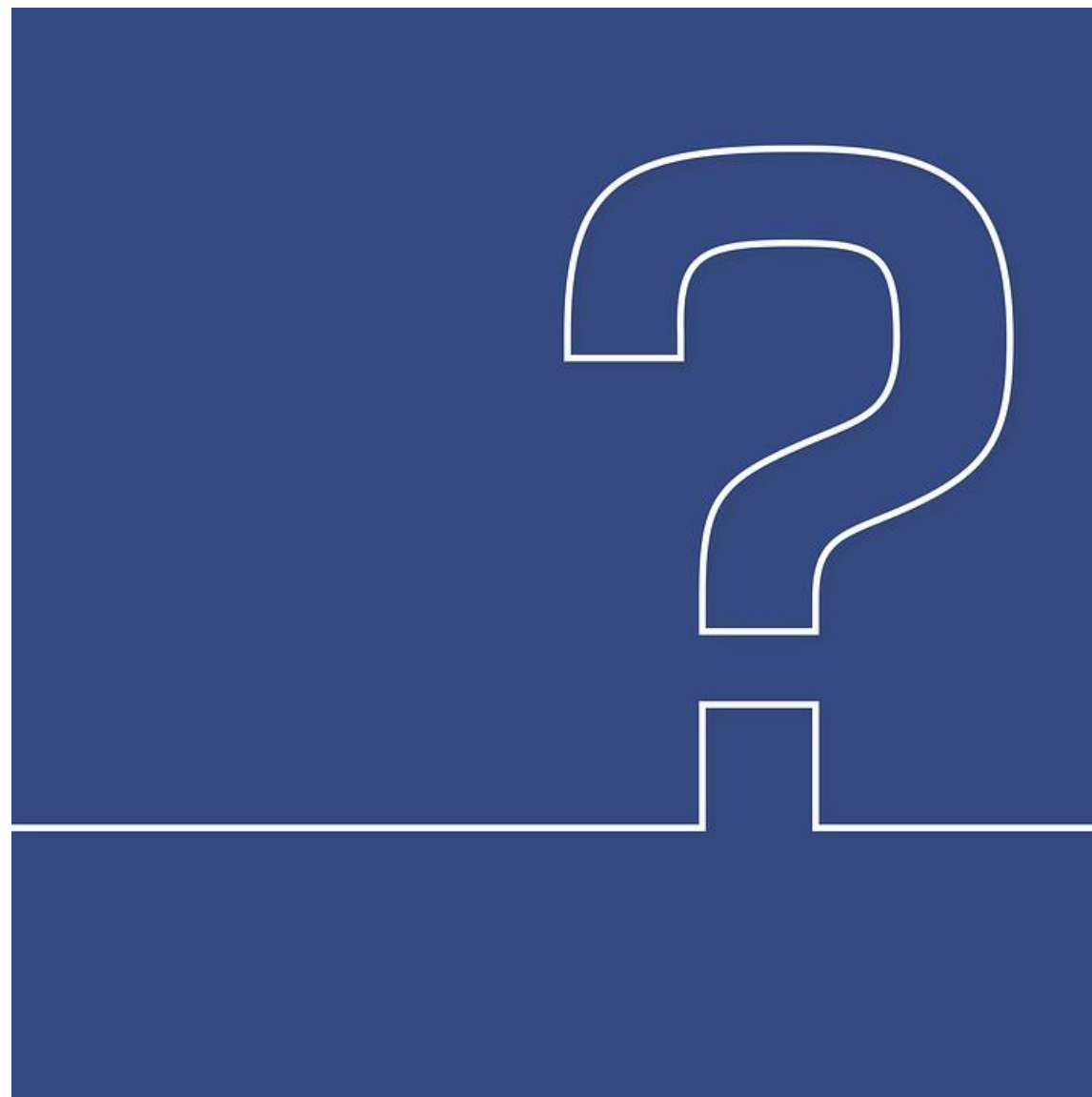
Steve.Abercrombie@seattlecolleges.edu

- <https://southseattle.edu/programs/sustainable-building-science-technology>





Q & A



Contact Information



melanie.danuser@nec.net



rebecca.sheppard@nec.net



melissa.sokolowsky@nec.net



steve.abercrombie@seattlecolleges.edu



Thank You



Powerful Facility Energy Conference

Sustaining Sponsors:



Partner Sponsor:

